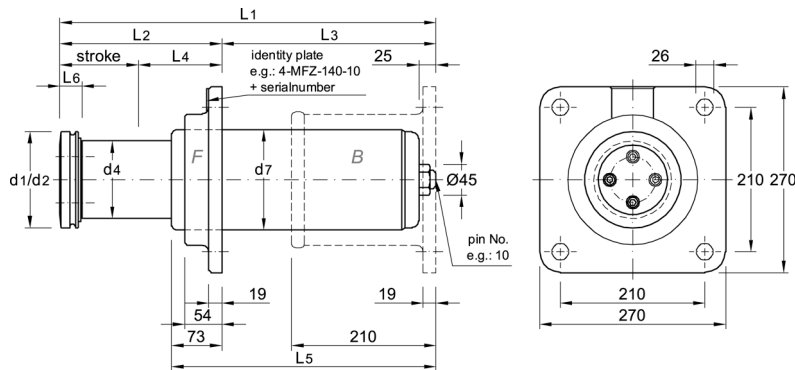


Hofmann, Herbert Ing.-Büro • Industrievertretungen GmbH & Co.
Colmarer Strasse 45 • D-28211 Bremen • Phone (49)-(0)421-44 00 36 • Fax (49)-(0)421-498 44 25
Email: mail@ho-ing.de • Homepage: www.ho-ing.de



114mm Stroke

Designs:

- 4M screwable buffer head
- 4G rolled buffer head
- 4H type 4M or 4G with high temperature seal
- 4D marine plated plunger
- 4N 4H + 4D

Mounting brackets:

- F front bracket
- B back bracket
- CF without front mounting bracket with front mounting groove

Hole Design:

- Z in bracket 210x210mm
- L in bracket 140x330mm

Buffer heads:

- 140 140mm Ø
- 575 146mm Ø only type 4G
- 130 330mm Ø only type 4G

Identification: for instance

Type 4 - Design M - Mounting bracket FZ - Buffer head 140 - Metering pin / tube 10

Stroke mm	at max. energy		Dimension in mm												
	absorption W E _{kin} in KJ	Endforce kN	L ₁	L ₂	L ₃	L ₄	L ₅	L ₆	d ₁	d ₂	d ₃	d ₄	d ₅	d ₆	d ₇
114	95	= 980	546	235	311	121	384	32	140	330		113			146

Stroke mm	W ₀ acc. Buffer application table / Impact weight W ₀ in t - metering pin number											
	up to 5t	up to 10t	up to 20t	up to 40t	up to 80t	up to 125t	up to 225t	up to 375t	up to 525t	300-750t	750-1500t	940-2000t
114	02	04	05	07	08	10	11	13	15	16	18	20

= high mass met. pin, on request

Weight [kg]			
Stroke mm	Design		
	MFZ	MBZ	MCF
114	50	64	38

Bellows: Recommended only in case of dirty surroundings or influence of flames.
Material see price list.

