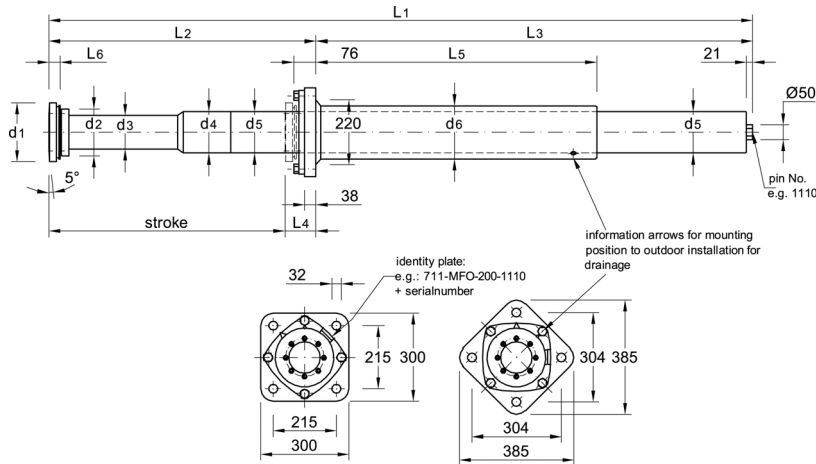


Hofmann, Herbert Ing.-Büro • Industrievertretungen GmbH & Co.
Colmarer Strasse 45 • D-28211 Bremen • Phone (49)-(0)421-44 00 36 • Fax (49)-(0)421-498 44 25
Email: mail@ho-ing.de • Homepage: www.ho-ing.de



Type 78 = 800mm Stroke
Type 710 = 1000mm Stroke
Type 711 = 1100mm Stroke
Typ e712 = 1200mm Stroke

Design:

700M screwable buffer head
700H high temperatur seal

Mounting Brackets:

F front bracket

Hole design:

O in bracket 215x215mm

Type 78 dimension d₆ and welding changed.

Identification: for instance

Type 711 - Design M - Mounting bracket FO - Buffer head 200 - Metering pin / tube 1108

Stroke mm	at max. energy absorbtion W		Endforce kN	Dimension in mm												
	E _{kin} in kJ	=		L ₁	L ₂	L ₃	L ₄	L ₅	L ₆	d ₁	d ₂	d ₃	d ₄	d ₅	d ₆	d ₇
800	476	=	700	2385	915	1480	105	951	38	200	159	113	140	140	180	
1000	595	=	700	3218	1160	2058	160	1208	38	200	159	113	140	144	180	
1100	655	=	700	3318	1260	2058	160	1208	38	200	159	113	140	144	180	
1200	714	=	700	3418	1360	2058	160	1208	38	200	159	113	140	144	180	

Stroke mm	W _e acc. Buffer application table / Impact weight W _e in t - metering pin number									
	up to 5t	up to 10t	up to 20t	up to 40t	up to 75t	up to 150t	up to 300t	up to 400t	up to 500t	up to 1000t
800	804	805	807	808	810	812	815	817	819	822
1000		1005	1007	1008	1010	1012	1015	1017	1019	1022
1100		1105	1107	1108	1110	1112	1115	1117	1119	1122
1200		1205	1207	1208	1210	1212	1215	1217	1219	1222

= high mass met. pin, on request

Weight in kg		
Stroke mm	Design	
	F	
800	228	
1000	244	
1100	245	
1200	246	

Bellows: Recommended only in case of dirty surroundings or influence of flames.
Material see price list.

Type 78/710/711/712

Static resistance diagram
nitrogen pressure 5 bar

