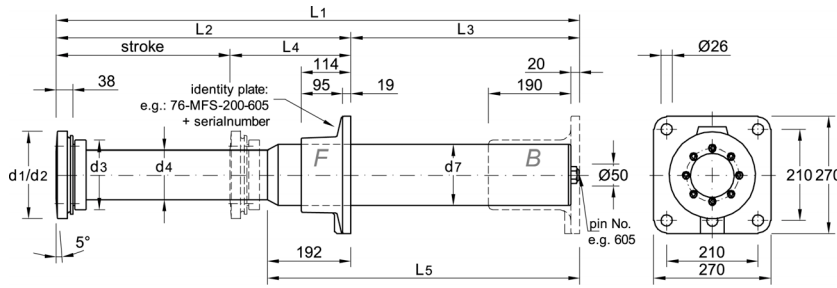


Hofmann, Herbert Ing.-Büro • Industrievertretungen GmbH & Co.
Colmarer Strasse 45 • D-28211 Bremen • Phone (49)-(0)421-44 00 36 • Fax (49)-(0)421-498 44 25
Email: mail@ho-ing.de • Homepage: www.ho-ing.de



Type 74 = 400mm Stroke
Type 75 = 500mm Stroke
Type 76 = 600mm Stroke

Design:
70M screwable buffer head
70H high temperature seal

Mounting bracket:
F front bracket
B back bracket
only type 74
CF capsule without bracket with front mounting groove

Hole design
Z in bracket 210x210mm

Identification: for instance

Type 76 - Design M - Mounting bracket FZ - Buffer head 200 - Metering pin / tube 605

Stroke mm	at max. energy absorption W		dimension in mm												
	E_{kin} in kJ	Endforce kN	L ₁	L ₂	L ₃	L ₄	L ₅	L ₆	d ₁	d ₂	d ₃	d ₄	d ₅	d ₆	d ₇
400	238	= 700	1205	678	527	278	719	38	140	200	135/159	113			140
500	297	= 700	1621	832	789	332	1006	38	140	200	135/159	113			144
600	357	= 700	1721	932	789	332	1006	38	140	200	135/159	113			144

Stroke mm	W _e acc. Buffer application table												
	Impact weight W _e in t - metering pin number												
	up to 1-4t	up to 2,5-7,5t	up to 10t	up to 20t	up to 40t	up to 80t	up to 150t	up to 300t	up to 600t	up to 800t	up to 1000t	up to 2000t	up to 4000t
400	402	403	404	405	407	408	410	412	415	417	419	422	424
500			504	505	507	508	510	512	515	517	519	522	
600			604	605	607	608	610	612	615	617	619	622	

=high mass met. pin, on request

Typ	Weight in kg			
	Design			
	FZ	FZ	BZ	BZ
74	140	200	140	200
75	73	78	82	87
76	97	102		
	98	103		

Bellows: Recommended only in case of dirty surroundings or influence of flames.
Material see price list.

Type 74/75/76

Static resistance diagram
nitrogen pressure 5 bar

