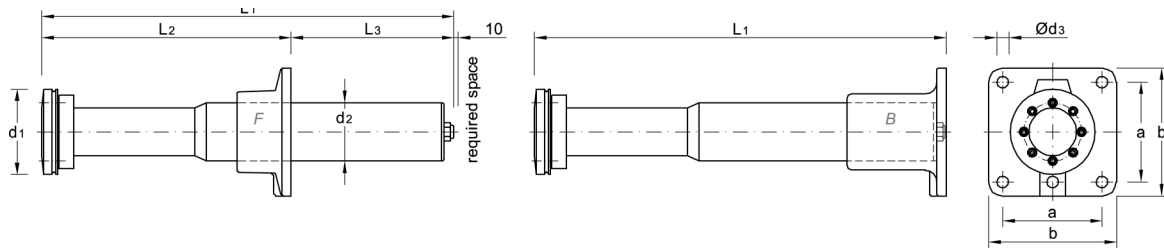


Hofmann, Herbert Ing.-Büro • Industrievertretungen GmbH & Co.
Colmarer Strasse 45 • D-28211 Bremen • Phone (49)-(0)421-44 00 36 • Fax (49)-(0)421-498 44 25
Email: mail@ho-ing.de • Homepage: www.ho-ing.de



F = Front bracket

B = Back bracket

T = 2x Foot mounting type 110 only

except types 78¹⁾, 710, 711, 712

D = Combination B+ front support type 110 only

and type 110 upwards 500 mm stroke

Energy to be absorbed /Buffer (kJ)	Endforce (kN) at type																									
	21				110								52	53	54	74 ²⁾	75	76	78 ¹⁾	710	711	712	4			
	50	100	150	200	200	300	400	500	600	700	800	1000	1200	250	300	400	400	500	600	800	1000	1100	1200	114		
1	23	11			6	4	3																			
2,5	58	29	19	14	14	10	7	6	5	4	3,7	3	2,5												25	
5	117	58	39	29	29	19	15	12	10	8	7	6	5	23	19											51
10	235	117	78	58	58	39	30	24	20	17	15	12	10	47	39	29	29									103
20		235	156	117	117	78	58	47	39	33	30	24	20	94	78	58	58	47	39							206
30			235	176	176	117	88	70	58	50	44	35	29	141	117	88	88	70	58	44						309
40				235	235	156	117	94	78	67	58	47	39	188	156	117	117	94	78	58	47					412
50					294	196	147	117	98	84	73	59	49	235	196	147	147	117	98	73	59	53				515
60					352	235	176	141	117	100	88	70	59	282	235	176	176	141	117	88	70	64	59			619
80						313	235	188	157	134	117	94	78	376	313	235	235	188	156	117	94	86	78			825
100							294	235	196	168	147	117	98	470	392	294	294	235	196	147	118	107	98			1031
150								294	252	220	176	147				441	441	352	294	220	176	160	147			
200												196					588	470	392	294	235	214	196			
300																		705	588	441	353	321	294			
350																			686	514	412	374	343			
400																					588	470	428	392		
450																					661	529	481	441		
max. poss. endforce [kN]	245	245	245	245	350	350	350	300	300	250	250	225	200	500	500	500	700	700	700	700	700	700	700	700	700	980
L ₁	260	420	584	700	839	1155	1469	1720	1975	2270	2564	3064	3635	871	1006	1277	1205	1621	1721	2420	3218	3318	3418			546
L ₂	134	184	234	360	360	578	678	778	878	978	1078	1278	1478	527	577	677	678	832	932	905	1160	1260	1360			235
L ₃	126	236	350	340	479	577	791	942	1097	1292	1486	1786	2157	344	429	600	527	789	789	1515	2058	2058	2058			311
d ₁	100				130								140/180				140/200				200				140/330	
d ₂ ^{*)}	97				110								123				140	144	180 ^{**)}				146			
a	120				120								210								215				210	
b	150				150								270								300				270	
d ₃	18				18								28				32				28					
Sheet	7				8 + 9								10				11				12				13 + 14	

Detailed leaflet / type or complete catalogue / CD on request

^{*)} Recommended min. space for installation d₂ + 5 mm

^{**)} Additional space for chamfer 20 mm x 45°

The given endforce includes efficiency factor μ = 0,85

All measurements in mm

¹⁾ Type 78 replaced Type 15

²⁾ Type 74 replaced Type 9

Impact acc. sketch / rail

